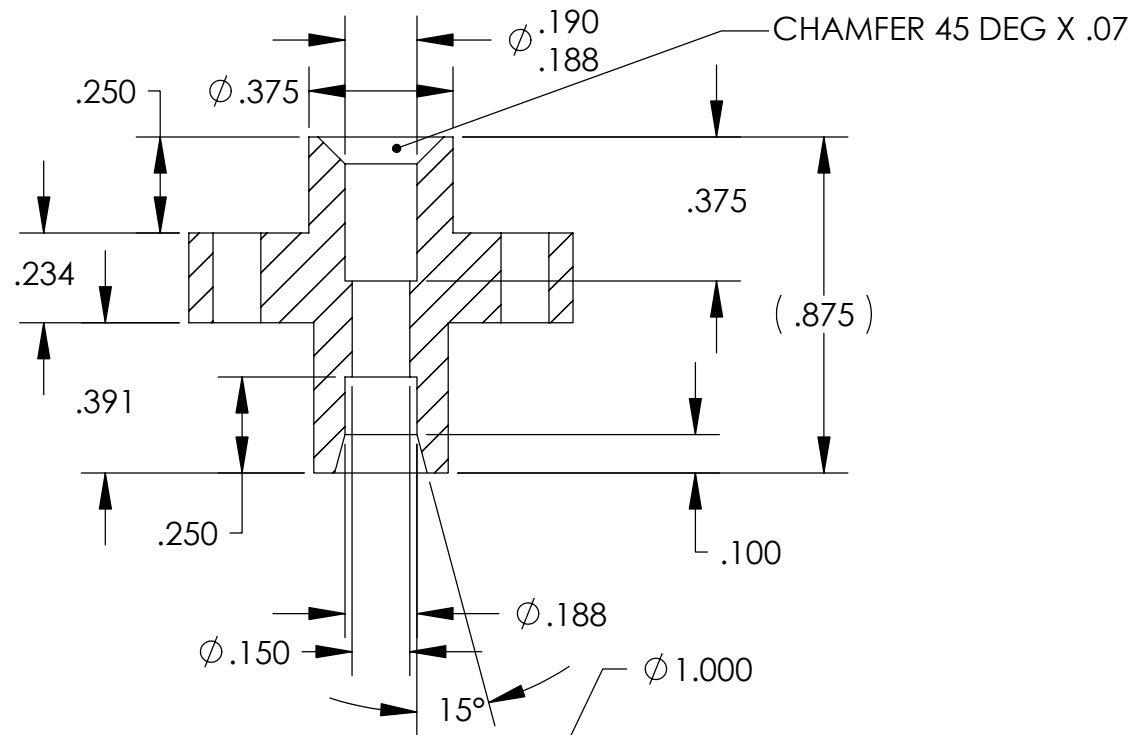


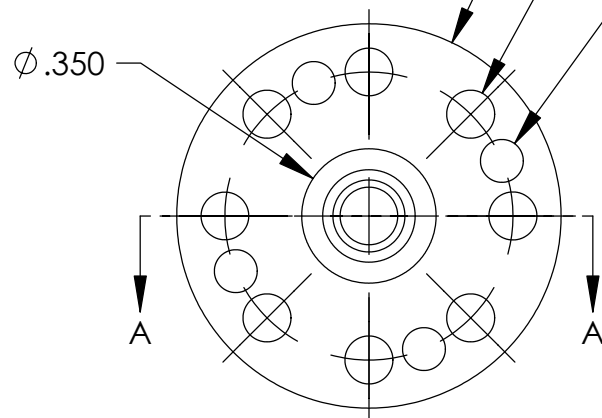
REV	DESCRIPTION	DATE
	Groove height was .035, added tapped	
B	holes	10/3/2003
C	Removed groove	3/12/2004
D	Added braze ring groove	3/25/2004



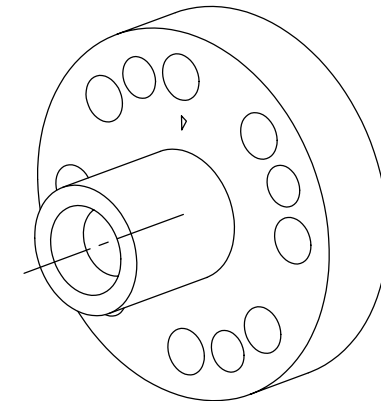
SECTION A-A

8X  $\phi .125$   
ON .750 B.C.

4X #4-40 H3 THRU



NOTES:  
1. 45 DEG CHAMFER IS FOR BRAZE RING.



**UNLESS OTHERWISE SPECIFIED:**

DIMENSIONS ARE IN INCHES  
DECIMAL TOLERANCES:  
.X  $\pm .030$  .XX  $\pm .015$  .XXX  $\pm .005$

ANGULAR TOL:  $\pm 1^\circ$  SURFACE ROUGHNESS:  $\sqrt{63}$

INTERNAL AND EXTERNAL SURFACE  
INTERSECTIONS SHALL BE UNIFORMLY  
FINISHED WITH CHAMFER .005/.010 X  $45^\circ$   
OR RADIUS .005/.010.  
CHAMFER ALL THREADED HOLES  $110^\circ$  OF  
MAJOR DIAMETER X  $45^\circ$

MATERIAL: **304 SST**

FINISH: **N/A**

## High Precision Devices

1668 Valtac Lane, Suite C, Boulder, Colorado 80301  
Phone: (303) 447-2558 Fax: (303) 447-2548 Web Site: [www.hpd-online.com](http://www.hpd-online.com)

TITLE: **p02101-034 flange, helium drain**

CONFIGURATION: **00-Default**

SIZE	QTY PER ASSM:	SCALE:	SHEET	OF	REV
<b>A</b>	<b>1</b>	<b>2:1</b>	<b>1</b>	<b>1</b>	<b>D</b>
DATE: <b>5/19/2004</b>		DRAWN BY: <b>C. Danaher</b>			